

# AIRASSURE™ INDOOR PM2.5 MASS CONCENTRATION MONITOR MODEL IPM2.5-NA

REAL-TIME IAQ MONITORING  
THAT YOU CAN TRUST

Only AirAssure™ PM2.5 Indoor Air Quality (IAQ) Monitor can provide real-time, reliably accurate measurement of PM2.5 dust concentrations inside commercial buildings. An easy-to-read digital display provides quick reference and interpretation of data. A simple dashboard interface enables convenient monitoring of multiple networked units. All this in a unit that requires minimal maintenance, promises long-term performance, and includes NIST traceable calibration for the satisfaction of tenants, employees, and building owners. The AirAssure Monitor is the ONLY cost effective on-the-wall instrument to meet the needs of ALL the stakeholders in a building.



## Features and Benefits

- + Ideal for commercial buildings
- + Simple wall mount installation
- + Analog and ethernet output available
- + Measures PM2.5 dust concentrations
- + At-a-glance interpretation of data, correlates to the Air Quality Index
- + Patent-pending auto-zero mechanism ensures consistently accurate performance
- + Field-serviceable
- + NIST traceable calibration

## AirAssure PM2.5 IAQ Monitor Package Includes

- + Wall-mountable PM2.5 monitor
- + Optional mounting base plate
- + Mounting template
- + Mounting hardware
- + NIST Statement of Conformance
- + Quick installation guide

## MEETS THE NEEDS OF ALL BUILDING STAKEHOLDERS

### + For Occupants

A measurement they can trust, in an easy-to-read color coded, digital display.

### + For Building Managers

A low maintenance unit with patented measurement stability and a simple dashboard interface that enables convenient monitoring of multiple networked units.

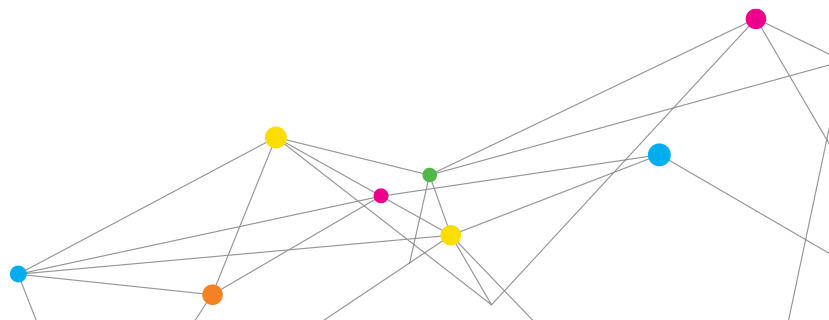
### + For Building Owners/Employers

Accurate measurement and demonstrated indoor air quality helps to retain employees and improve occupancy rates with the promise of a safe, healthy indoor environment.

PLEASE NOTE - This instrument is not currently available for sale in Europe.



UNDERSTANDING, ACCELERATED



# SPECIFICATIONS

## AIRASSURE™ INDOOR PM2.5 MASS CONCENTRATION MONITOR MODEL IPM2.5-NA

### Sensor Type

Light scattering photometer

### Aerosol Concentration Range

5 to 300  $\mu\text{g}/\text{m}^3$

### Display Readings

PM2.5 mass concentration and color change to represent Air Quality Index

### Screen Resolution

1  $\mu\text{g}/\text{m}^3$  increments

### Unit to Unit Variability

$\pm 25\%$

### Zero Stability

$\pm 10 \mu\text{g}/\text{m}^3$

### Operational Temperature

10 to 30°C

### Storage Temperature

-10 to 50°C

### Operational Humidity

Less than 65% RH

### Time Constant

5 minute trailing average, screen updates every 1 second

### Physical Size

Dimensions (HWD) 16.2 cm x 8.5 cm x 3.3 cm  
(6.4 in. x 3.4 in. x 1.3 in.)  
Depth including connector 3.8 cm (1.5 in.)

### Communications

+ Ethernet  
+ Analog (4-20mA)

### Power

24 volt (AC or DC), 5W max

### Screen

4.3 in. color LCD display

### Weight

+ 0.2 kg (0.5 lb)  
+ Packaged: 0.5 kg (1.0 lb)

### Calibration

Pre-calibrated sensor with NIST Statement of Conformance

### Language

+ English  
+ Simplified Mandarin

### Mounting

+ Wall mount  
+ Type 86 gang box  
+ American single gang box

### Service

+ Local service available  
+ Sensor and some key components are field-serviceable

### Web App

+ Ethernet connection  
+ Password protection capability  
+ Data export capability  
+ Supports up to 99 sensors  
+ Compatible with mobile devices  
+ Located on local server  
+ Display measurement on remote screen  
+ Output coordinated to Air Quality Index color rating  
+ Supports Windows® 7, 8.1

### Service Kits

+ IPM2.5-SENS - Calibrated replacement sensor  
+ IPM2.5-KIT - Replacement pump, fan, and filter kit

TSI, and the TSI logo are registered trademarks, and AirAssure is a trademark of TSI Incorporated

Windows is a registered trademarks of Microsoft Corporation in the United States and/or other countries.



UNDERSTANDING, ACCELERATED

TSI Incorporated - Visit our website [www.tsi.com](http://www.tsi.com) for more information.

<b>USA</b>	<b>Tel:</b> +1 800 874 2811	<b>India</b>	<b>Tel:</b> +91 80 67877200
<b>UK</b>	<b>Tel:</b> +44 149 4 459200	<b>China</b>	<b>Tel:</b> +86 10 8219 7688
<b>France</b>	<b>Tel:</b> +33 1 41 19 21 99	<b>Singapore</b>	<b>Tel:</b> +65 6595 6388
<b>Germany</b>	<b>Tel:</b> +49 241 523030		